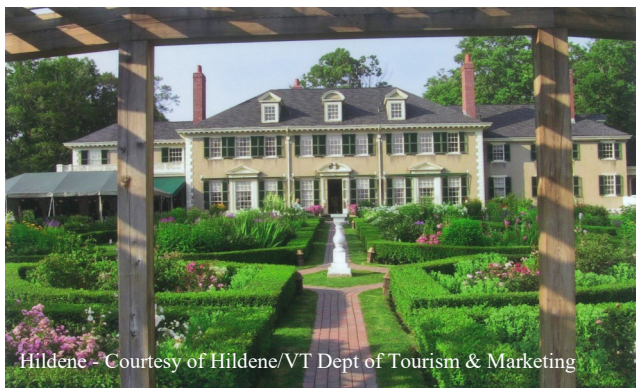


NEW

Made in Vermont



Hildene - Courtesy of Hildene/VT Dept of Tourism & Marketing

July 20-25, 2024



LENZNER TOUR & TRAVEL

110 LENZNER COURT
SEWICKLEY, PA 15143

1-800-342-2349

www.coachride.com

Day 1: Get away from the maddening crowds to a place of serenity and breathtakingly picturesque landscapes -- **Vermont!** Overnight in **Connecticut**.

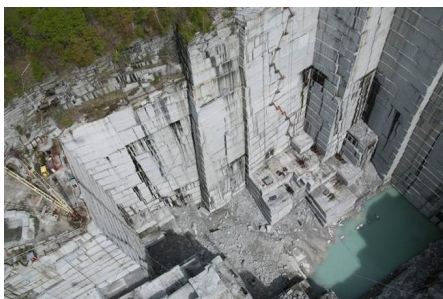
Day 2: Enjoy a stop at **Hildene - Robert Todd-Lincoln's family estate**. Visit the Georgian mansion, restored 1903 wooden Pullman palace car - Sunbeam, and lovely English Gardens. Check-in to your hotel in Rutland/Killington, VT, for the next three nights. (B,D)

Day 3: Depart with a local guide and visit the **Vermont Marble Museum**. See the Marble Chapel, Hall of Presidents' busts carved of marble, Marbles of the World, and more! **Gorham Covered Bridge** for photo stop. Learn the history of maple sugaring through exciting and educational exhibits, maple syrup samples and country store at the **New England Maple Museum**. At **Danforth Pewter** see artisans at work and discover the history and romance of this timeless metal. Then it's off to an **Alpaca Farm**. Visit the farm mill and store featuring garments and accessories of alpaca fibers. Tonight's dinner features a **Vermont Chef**. **Enjoy being entertained "in the kitchen", cooking tips, recipe, and TASTE the results!** (B,D)

Day 4: Depart with a local guide. Start your day with a visit to the **Rock of Ages Granite Quarry** - the World's largest working granite quarry. Next is the **Cold Hollow Cider Mill** for a self-guided tour of the working cider mill. Next is **The Annex (Lake Champlain Chocolates, Cabot Cheese, Smugglers Distillery)**. (B,D)

Day 5: Stop and shop at the **Vermont Country Store and Yankee Candle Village**. Overnight in **Connecticut**. (B)

Day 6: It's time to tuck away those wonderful memories of Vermont as you head home. (B)



Rock of Ages Granite Quarries - Courtesy of Rock of Ages

Cost per person, per room occupancy:

\$1,444.00 double **\$1,325.00 triple**
NO QUADS **\$1,795.00 single**

Includes: Transportation, lodging, five breakfasts, two dinners, gourmet dinner & live cooking demo, touring and admissions per itinerary, baggage handling and taxes.

Deposit: \$100.00 per person
Insurance: Optional, see below
Balance due: May 16, 2024; Please call for availability after balance due date.

Cancellation Policy: Prior to 65 days - No Charge; 64 days or less - **NO REFUND**

Written notice of cancellation is required before monies refunded.

Depart: 6:00 am - Sewickley
6:30 am - Pittsburgh
7:00 am - Monroeville
7:15 am - Irwin
7:30 am - New Stanton

***Note: Days of touring/order of attractions subject to change.**

Travel Insurance is optional. To be eligible for the waiver of pre-existing medical condition exclusion, the protection plan must be purchased within 15 days from the time you make your initial trip deposit and for the prepaid non-refundable payments or deposits. If purchased, the insurance premium is refundable during the 15 day review period, unless you have filed a claim or departed on your trip. The insurance premium is non-refundable after the 15 day review period. To view/download the Policy, go to: <http://policy.travelexinsurance.com/312A-1217>.

Walking Code 4 - This tour requires a heavy amount of walking. To truly experience the program and destination, you need to be able to participate in physical activities such as long walking tours, walking over uneven terrain, climbing stairs and periods of standing. Some of